

## Tube clamps of standard series DIN 3015-1

**Technopolymer (polypropylene)**

### MATERIAL

Polypropylene-based (PP) technopolymer, high UV resistance, RAL 9005 black colour.

### STANDARD EXECUTIONS

Fastening holes for cylindrical-head or hexagon-head screws.

- **DCE-S-1**: with one hole.
- **DCE-S-2-3-4-5-6-7**: with two holes.

### WORKING TEMPERATURE

From -30 °C to +90 °C.

### FEATURES AND APPLICATIONS

The standard series tube clamp, designed according to DIN 3015-1, provides secure fastening for rigid pipes or flexible cables, effectively minimising vibrations and noise.

In particular, the DIN regulation defines specific reference groups based on the overall dimensions of the collar bodies.

The table shows the correspondence between the DIN 3015-1 group and the corresponding DCE-S group.

The special internal knurling of the two half clamps enables a high level of grip between the clamp and the tube, thus ensuring high stability.

They are used both in industrial hydraulics as a fastening system for the construction of rigid pipes (liquids or gases) and in mobile hydraulics (material handling machines, agricultural vehicles) for the construction of hydraulic or pneumatic systems.

They are also used in the rail and naval sectors. See Tube clamps technical data.

### EXECUTIONS ON REQUEST

- Clamps for tubes with different diameters.
- Various materials and colours.

### ACCESSORIES

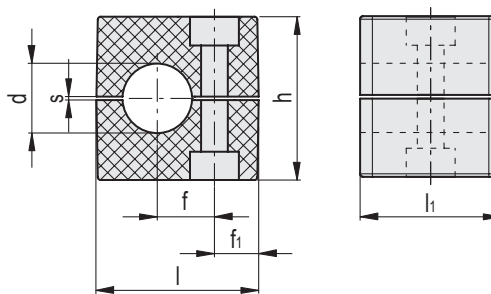
For the assembly kit DCK-S.

- DCE-PU: cover plates.
- DCE-PL: welded lower plates.
- DCE-SRC: cylinder head screws.
- DCE-SRE: hexagon head screws.
- DCE-WA: flat washers.
- DCE-GU: mounting guides.
- DCE-NTG: nuts for mounting guides.



Correspondence between the DIN 3015-1 group and the DCE-S group							
DIN 3015-1 group	0	1	2	3	4	5	6
DCE-S group	1	2	3	4	5	6	7

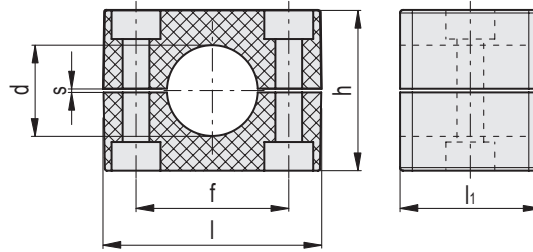
### DCE-S-1



### DCE-S-1

Code	Description	Group	d	d Tube [GAS]	f	f <sub>1</sub>	l	l <sub>i</sub>	h	s	Fastening with screws Metric	Fastening with screws UNC	⚖
570001-C9	DCE-S-1-6-PP-C9	1	6	-	10	9.5	28	30	27	0.6	M 6	1/4-20	7
570003-C9	DCE-S-1-8-PP-C9	1	8	5/16	10	9.5	28	30	27	0.6	M 6	1/4-20	7
570005-C9	DCE-S-1-10-PP-C9	1	10	-	10	9.5	28	30	27	0.6	M 6	1/4-20	6
570007-C9	DCE-S-1-12-PP-C9	1	12	-	10	9.5	28	30	27	0.6	M 6	1/4-20	6

DCE-S-2-3-4-5-6-7



DCE-S-2-3-4-5-6-7

Code	Description	Group	d	d Tube [GAS]	f	l	li	h	s	Fastening with screws Metric	Fastening with screws UNC	⚖
570011-C9	DCE-S-2-6-PP-C9	2	6	-	20	37	30	27	0.6	M6	1/4-20	9
570013-C9	DCE-S-2-6.4-PP-C9	2	6.4	1/4	20	37	30	27	0.6	M6	1/4-20	9
570015-C9	DCE-S-2-8-PP-C9	2	8	5/16	20	37	30	27	0.6	M6	1/4-20	9
570017-C9	DCE-S-2-9.5-PP-C9	2	9.5	3/8	20	37	30	27	0.6	M6	1/4-20	8
570019-C9	DCE-S-2-10-PP-C9	2	10	-	20	37	30	27	0.6	M6	1/4-20	8
570021-C9	DCE-S-2-12-PP-C9	2	12	-	20	37	30	27	0.6	M6	1/4-20	8
570023-C9	DCE-S-2-12.7-PP-C9	2	12.7	1/2	20	37	30	27	0.6	M6	1/4-20	8
570026-C9	DCE-S-3-12.7-PP-C9	3	12.7	1/2	26	42	30	33	0.8	M6	1/4-20	13
570027-C9	DCE-S-3-14-PP-C9	3	14	-	26	42	30	33	0.8	M6	1/4-20	11
570028-C9	DCE-S-3-15-PP-C9	3	15	-	26	42	30	33	0.8	M6	1/4-20	11
570029-C9	DCE-S-3-16-PP-C9	3	16	5/8	26	42	30	33	0.8	M6	1/4-20	10
570030-C9	DCE-S-3-17.2-PP-C9	3	17.2	-	26	42	30	33	0.8	M6	1/4-20	10
570031-C9	DCE-S-3-18-PP-C9	3	18	-	26	42	30	33	0.8	M6	1/4-20	10
570041-C9	DCE-S-4-19-PP-C9	4	19	3/4	33	50	30	36	0.8	M6	1/4-20	15
570043-C9	DCE-S-4-20-PP-C9	4	20	-	33	50	30	36	0.8	M6	1/4-20	15
570045-C9	DCE-S-4-21.3-PP-C9	4	21.3	-	33	50	30	36	0.8	M6	1/4-20	14
570047-C9	DCE-S-4-22-PP-C9	4	22	7/8	33	50	30	36	0.8	M6	1/4-20	14
570049-C9	DCE-S-4-25-PP-C9	4	25	-	33	50	30	36	0.8	M6	1/4-20	13
570051-C9	DCE-S-4-25.4-PP-C9	4	25.4	1	33	50	30	36	0.8	M6	1/4-20	12
570061-C9	DCE-S-5-26.9-PP-C9	5	26.9	-	40	57	30	42	1	M6	1/4-20	17
570063-C9	DCE-S-5-28-PP-C9	5	28	-	40	57	30	42	1	M6	1/4-20	16
570065-C9	DCE-S-5-30-PP-C9	5	30	-	40	57	30	42	1	M6	1/4-20	15
570067-C9	DCE-S-5-32-PP-C9	5	32	1 1/4	40	57	30	42	1	M6	1/4-20	15
570071-C9	DCE-S-6-32-PP-C9	6	32	1 1/4	52	71	30	58	1.4	M6	1/4-20	32
570073-C9	DCE-S-6-33.7-PP-C9	6	33.7	-	52	71	30	58	1.4	M6	1/4-20	31
570075-C9	DCE-S-6-35-PP-C9	6	35	-	52	71	30	58	1.4	M6	1/4-20	29
570077-C9	DCE-S-6-38-PP-C9	6	38	1 1/2	52	71	30	58	1.4	M6	1/4-20	27
570079-C9	DCE-S-6-40-PP-C9	6	40	-	52	71	30	58	1.4	M6	1/4-20	25
570081-C9	DCE-S-6-42.4-PP-C9	6	42.4	-	52	71	30	58	1.4	M6	1/4-20	25
570083-C9	DCE-S-6-45-PP-C9	6	45	-	52	71	30	58	1.4	M6	1/4-20	22
570091-C9	DCE-S-7-48.3-PP-C9	7	48.3	-	66	86	30	66	1.4	M6	1/4-20	37
570093-C9	DCE-S-7-50-PP-C9	7	50	-	66	86	30	66	1.4	M6	1/4-20	34
570095-C9	DCE-S-7-50.8-PP-C9	7	50.8	2	66	86	30	66	1.4	M6	1/4-20	33
570097-C9	DCE-S-7-54-PP-C9	7	54	-	66	86	30	66	1.4	M6	1/4-20	31



Accessories for hydraulic systems 15