

## Flat washers

for DCE tube clamps, steel

### MATERIAL

Zinc-plated steel, class 8.

### STANDARD EXECUTIONS

- **DCE-WA-S**: for DCE-S (DIN 3015-1) standard series tube clamps.
- **DCE-WA-D**: for DCE-D (DIN 3015-3) double series tube clamps.

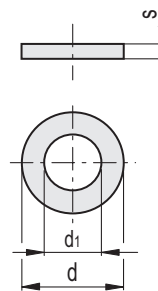
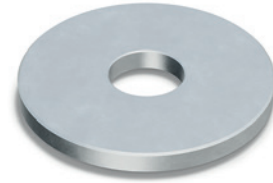
### FEATURES AND APPLICATIONS

They are mainly used in combination with DCE-SRC and DCE-SRE screws for fastening half clamps.

### ACCESSORIES

For the assembly kit DCK-S and DCK-D.

- DCE-S: standard series tube clamps.
- DCE-D: double series tube clamps.
- DCE-SRC: cylinder head screws.
- DCE-SRE: hexagon head screws.



### DCE-WA-S

| Code   | Description         | d  | d <sub>1</sub> | s   | Fastening with screws |   |
|--------|---------------------|----|----------------|-----|-----------------------|---|
| 570201 | DCE-WA-S-6.3-0.8-ZN | 11 | 6.4            | 1.6 | M 6                   | 1 |

### DCE-WA-D

| Code   | Description       | d  | d <sub>1</sub> | s | Fastening with screws |   |
|--------|-------------------|----|----------------|---|-----------------------|---|
| 570203 | DCE-WA-D-6.5-2-ZN | 22 | 6.5            | 2 | M 6                   | 6 |
| 570205 | DCE-WA-D-8.5-2-ZN | 22 | 8.5            | 2 | M 8                   | 6 |